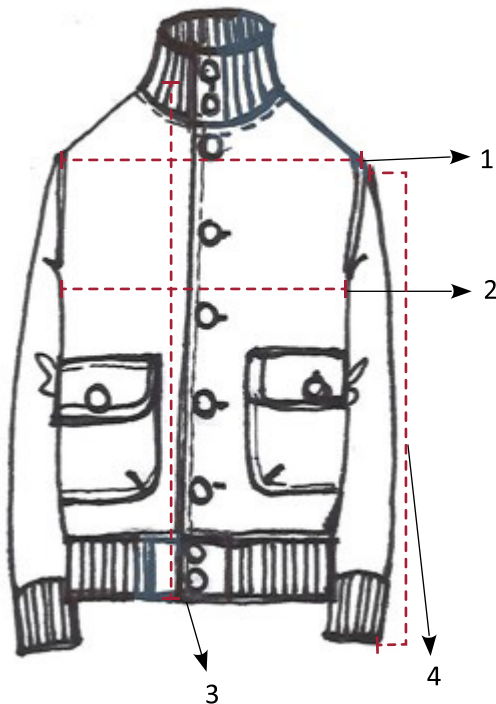




**CAPOBIANCO**  
MADE IN ITALY

If you have not already purchased items of our brand we recommend you to rely to the conversion table below in order to choose your correct size. For any doubt please email us to the following address: [info@capobianco.org](mailto:info@capobianco.org)

	46 (IT) - 42 (EU)	48 (IT) - 44 (EU)	50 (IT) - 46 (EU)	52 (IT) - 48 (EU)	54 (IT) - 50 (EU)	56 (IT) - 52 (EU)	58 (IT) - 54 (EU)	60 (IT) - 56 (EU)	Tolerance CM+/CM-
1 Shoulder width	41,5	42,5	43,5	44,5	45,5	46,5	47,5	48	1
2 Half chest 2 cm, below the armhole	52	54	56	58	60	62	64	66	1
3 Center back total length	63	64	65,5	67	68	69	69	69	1
4 Sleeve length	64	65	67	69	70	70	69	69	0,7



#### How to Measure:-

- 1 Shoulder width: Place the garment (back facing up) on a horizontal plane. Measure the distance between the two armholes in the highest part.
- 2 Chest width: Place the garment (front facing up) on a horizontal plane. Measure the distance between the two armholes , 2 cms below them.
- 3 Total length from center back: Place the garment (back facing up) on a horizontal plane. Measure the distance from the center back to the bottom (excluding the collar).
- 4 Place the garment (front facing up) on a horizontal plane. Measure the distance from the center of the armhole, to the bottom (including eventually the wrist).