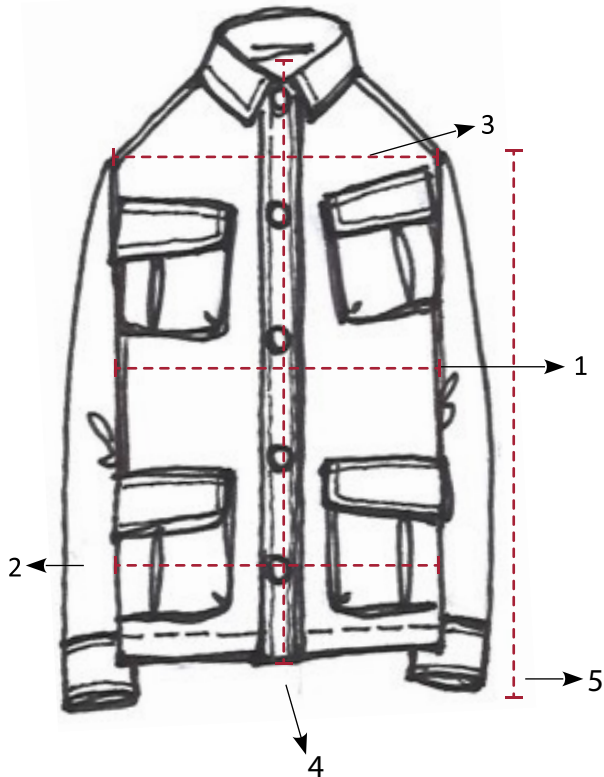


If you have not already purchased items of our brand we recommend you to rely to the conversion table below in order to choose your correct size. For any doubt please email us to the following address: info@capobianco.org

		46 (IT) - 42 (EU)	48 (IT) - 44 (EU)	50 (IT) - 46 (EU)	52 (IT) - 48 (EU)	54 (IT) - 50 (EU)	56 (IT) - 52 (EU)	58 (IT) - 54 (EU)	60 (IT) - 56 (EU)	62 (IT) - 58 (EU)	Tolerance CM+/CM -
1	Half chest (2 cm)	52	54	56	58	60	62	64	66	68	0,5
2	Half waist	49.5	51.5	53.5	55.5	57.5	59.5	61.5	63.5	65.5	1
3	Shoulder width	43.5	44.5	45.5	46.5	47.5	48.5	49.5	50.5	51.5	1
4	Lenght from center back neck	69	70	71.5	73	74.5	74.5	74.5	74.5	74.5	1
5	Sleeve length	64.75	65.75	67.75	68.75	70.75	70.75	70.75	70.75	70.75	1



How to Measure:-

- 1. Chest Width:** Lay the garment (front side up) on a horizontal surface. Measure the distance between the two sleeve seams, 2 cm below them.
- 2. Waist Width:** Lay the garment (Front side up) on a horizontal surface. Measure the distance between the two highest points of the waist seams.
- 3. Shoulder Width:** Lay the garment (back side up) on a horizontal surface. Measure the distance between the two highest points of the sleeve seams.
- 4. Length from Center Back Neck:** Lay the garment (back side up) on a horizontal surface. Measure the distance from the center back neck (excluding the collar) to the bottom of the garment.
- 5. Sleeve Length:** Lay the sleeve (front side up) on a horizontal surface. Measure the distance from the center of the sleeve seam to the end of the sleeve (including the cuff, if applicable).